



Discovering the Value of SOA WebSphere Process Integration

WebSphere Business Modeler Overview

SOA on your terms and our expertise



Agenda

- Why Model the Business?
- WebSphere Business Modeler
- IBM Software Development Platform and Business Driven Development



Why customers model

■ Modeling for compliance/documentation

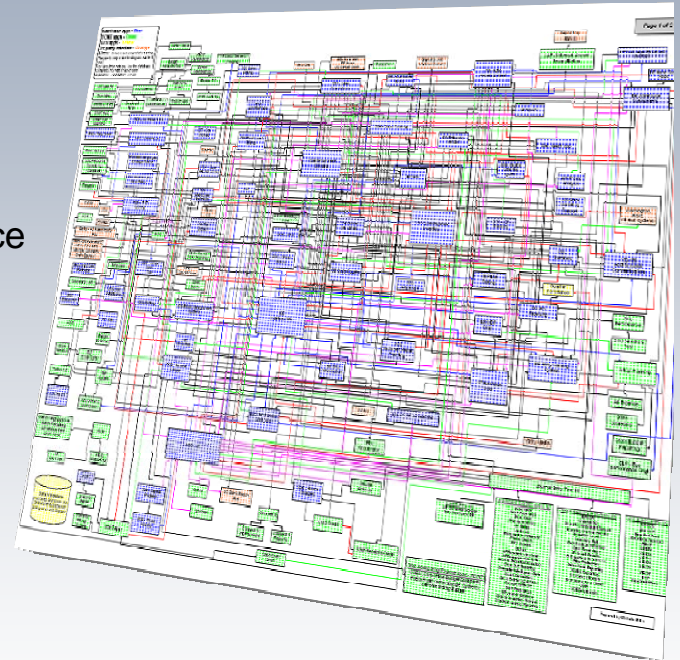
- Document processes for use by a business to understand the business process
- Customers use output for training, collaboration, documentation requirements for compliance regulations (Sarbanes-Oxley and Basel II)
- Linkage to real-time monitoring provides a feedback mechanism for reporting requirements needed for compliance

■ Modeling for redesign

- Document both the current state and future state business process and the comparison to determine Return on Investment (ROI) analysis
- Six Sigma and Process Improvement are common methodologies

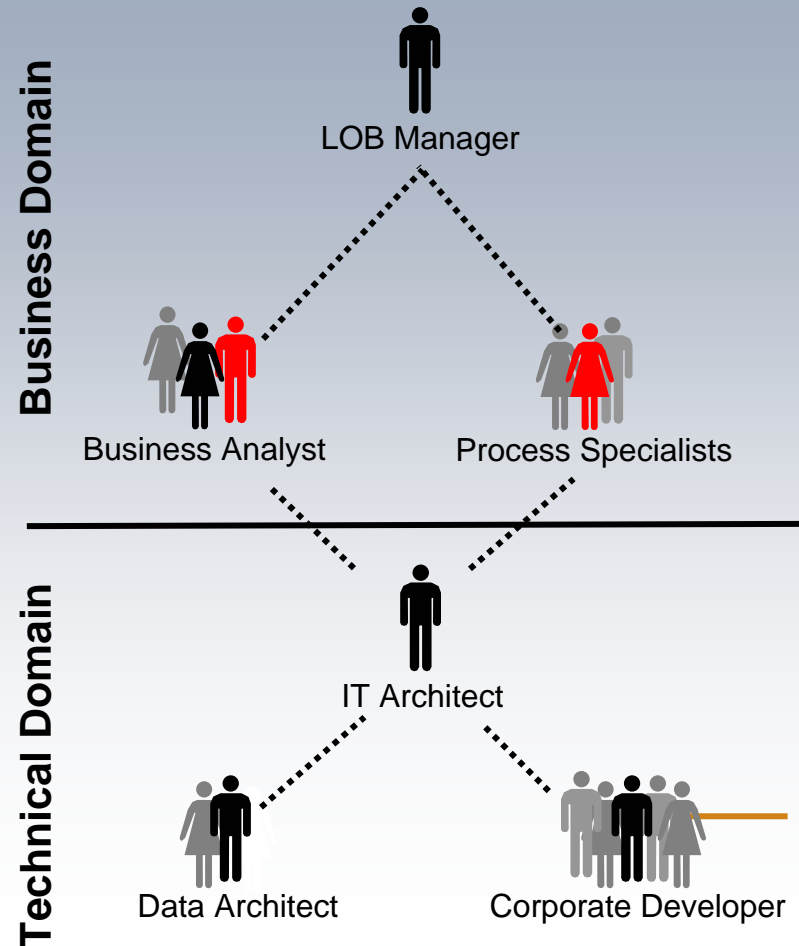
■ Modeling for execution

- Modeler can create artifacts from the business model and make them available in technology development tools to reduce the overall implementation time of new business processes.



Why customers Model

- **Model to bring business and IT together**
 - Communicate fully with subject matter experts
 - Provide visibility into the enterprise
 - Created complete documentation of processes and procedures
 - Deliver complete requirements documentation to IT
 - Allow IT to understand the scope of the business issues and how to solve



Streamline or optimize business processes is a top priority

Business priorities

Streamline or optimize business processes

Boost worker productivity across company	85%
Improve customer service	84%
Gain better return on IT capital investments	82%
Keep up with change	81%
Organize and use customer data	80%
Use IT to achieve compliance	79%
Retain skilled staff members	78%
Reduce the cost of IT operations	78%

IT priorities

Application Integration

BI/Data warehouse	48%
Security	42%
Document/Content management	36%
Corporate portals	30%
Storage	26%
Custom development	22%
CRM	20%
Network management	20%

85%

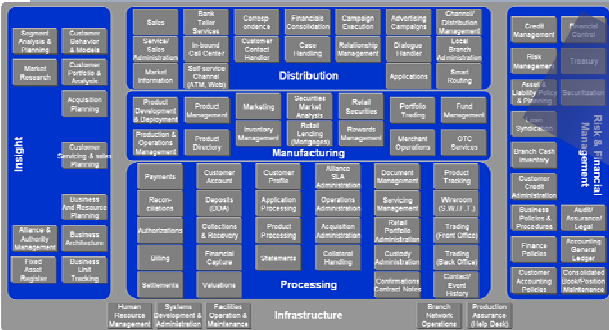
“...implementing an efficient, flexible, secure infrastructure remains high on the priority list for the CIOs surveyed. Application integration technology remains a critical component of that infrastructure.”

—“some Integration Vendors Outperform the Slow Software Market,” J. Thompson, J. Correia, M. Pezzini, Gartner, Sept. 16, 2004

Sources: Outlook 2004: Priorities 1Q InformationWeek Research, January 2004 Merrill Lynch CIO Survey Results, September 2004

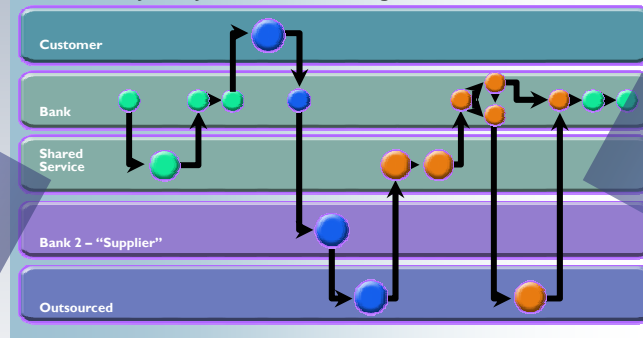
Starting with the process is critical to SOA flexibility

Full Business view



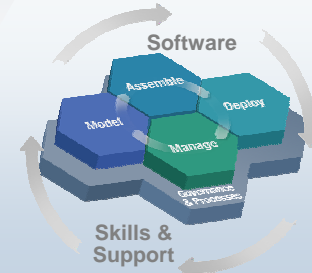
Process to optimize

Case Study: Payments Processing



Creating IT flexibility

IBM SOA Foundation

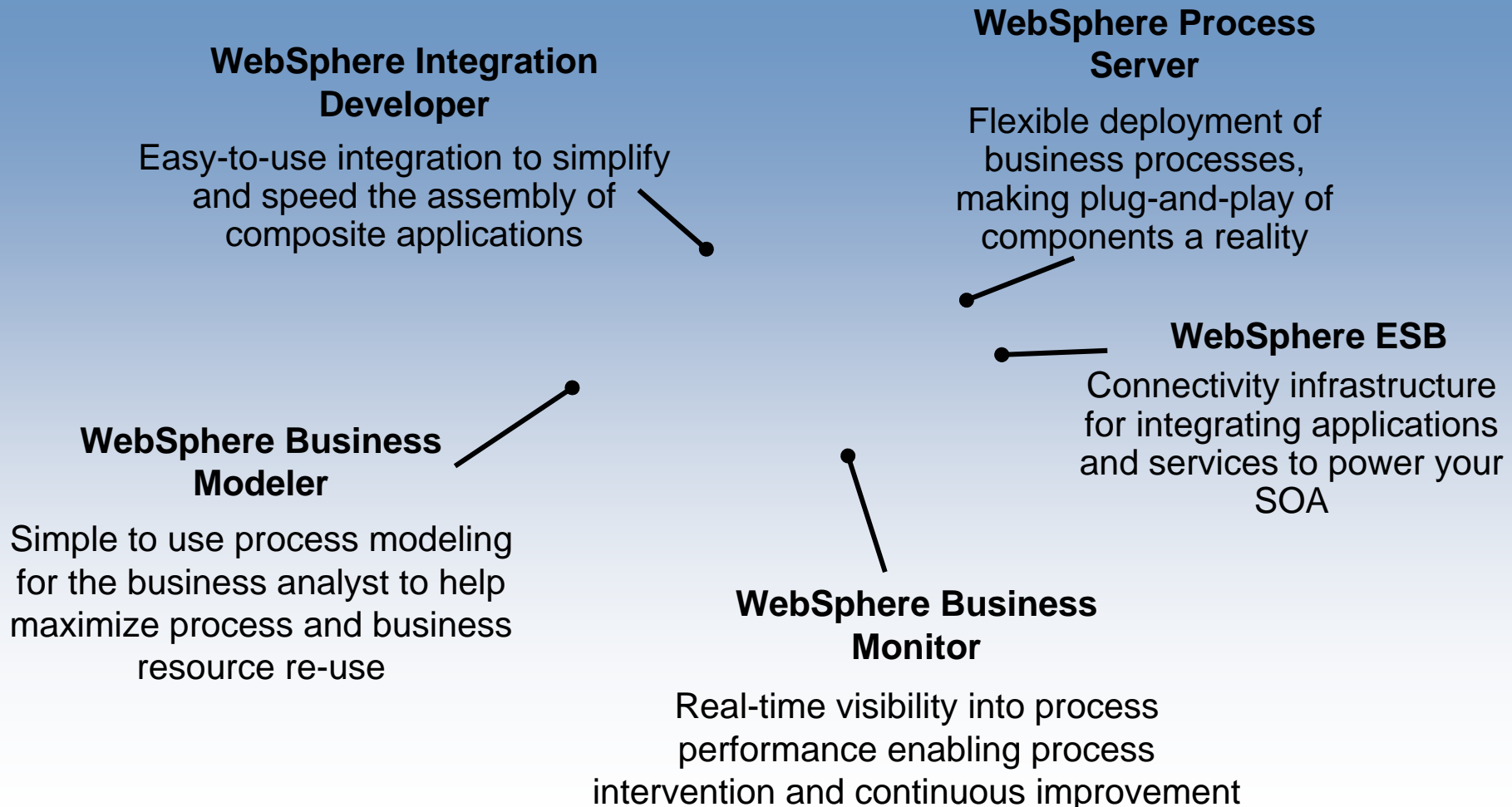


Agenda

- Why Model the Business?
- WebSphere Business Modeler
- IBM Software Development Platform and Business Driven Development

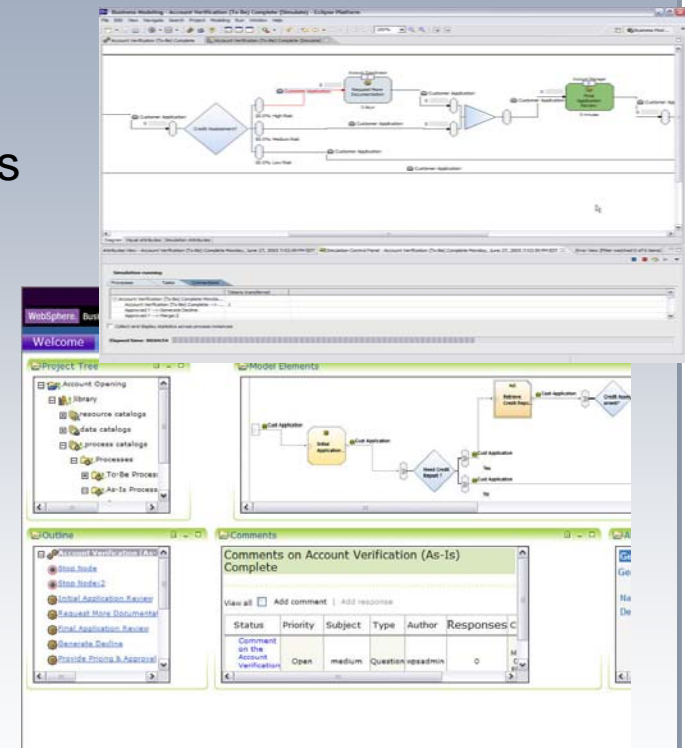


End-to-end process capabilities for your SOA



Best-in-class business modeling and simulation

- Simple to use business modeling tool
 - Allow the people who know the business to model
 - Drag and drop for the business analyst
- Precise modeling of the vital aspects of the process
 - Understand your business models and make informed decisions before deployment
 - Model resources, roles, organization, information, business metrics
- Collaborative modeling
 - Communicate and participate across your enterprise
 - Enables team work and web publication
- Clean hand-off to I/T
 - Rapid and accurate deployment of your solutions
 - Business modeling is the starting point for IT deployment



IBM tooling value proposition

- Industry-leading Business Modeling Tool
- Role-based tools provide greater productivity by allowing sharing and a common approach for business and IT

Rational software
WebSphere Studio



Best-of-breed tools and teams working together in an integrated environment

Closing the gap between business and IT

WebSphere Business Modeler

Customers model processes for many purposes:

- Modeling For Compliance/Documentation
- Modeling For Redesign
- Modeling For Execution



Application Development

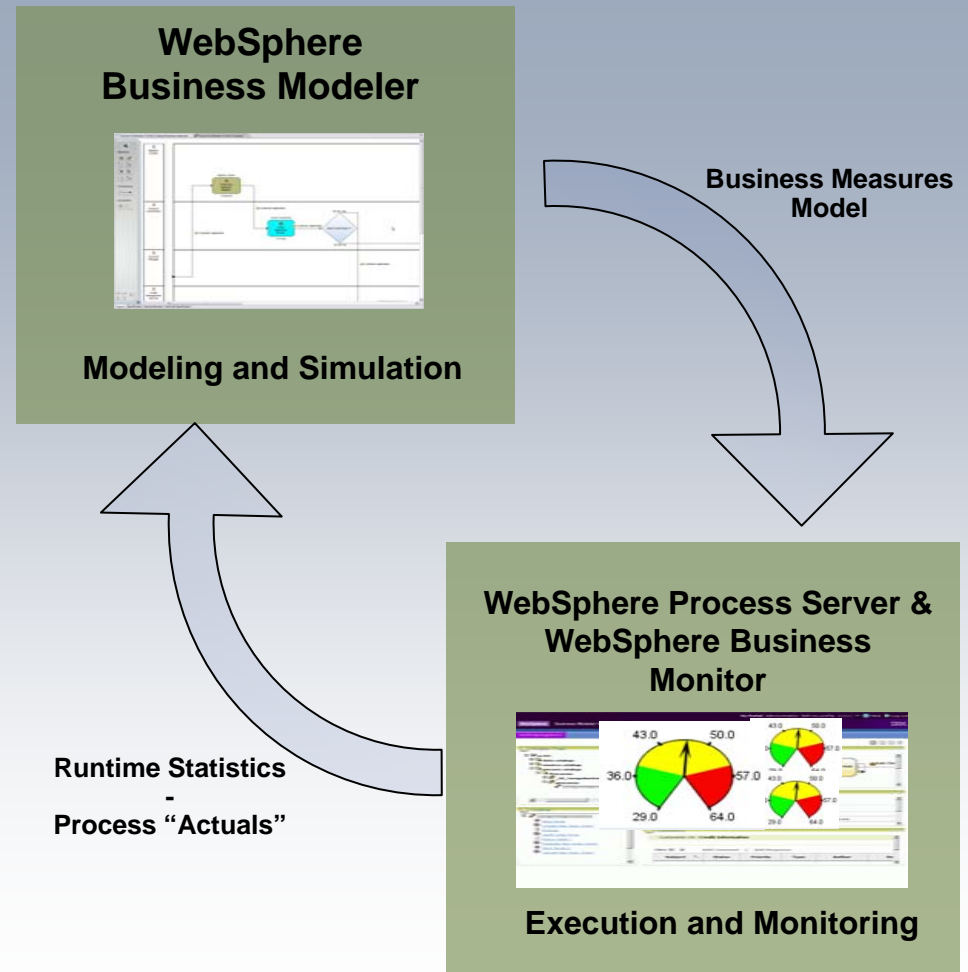
Rational Software Architect or
Rational XDE

Process Choreography and Human Workflow

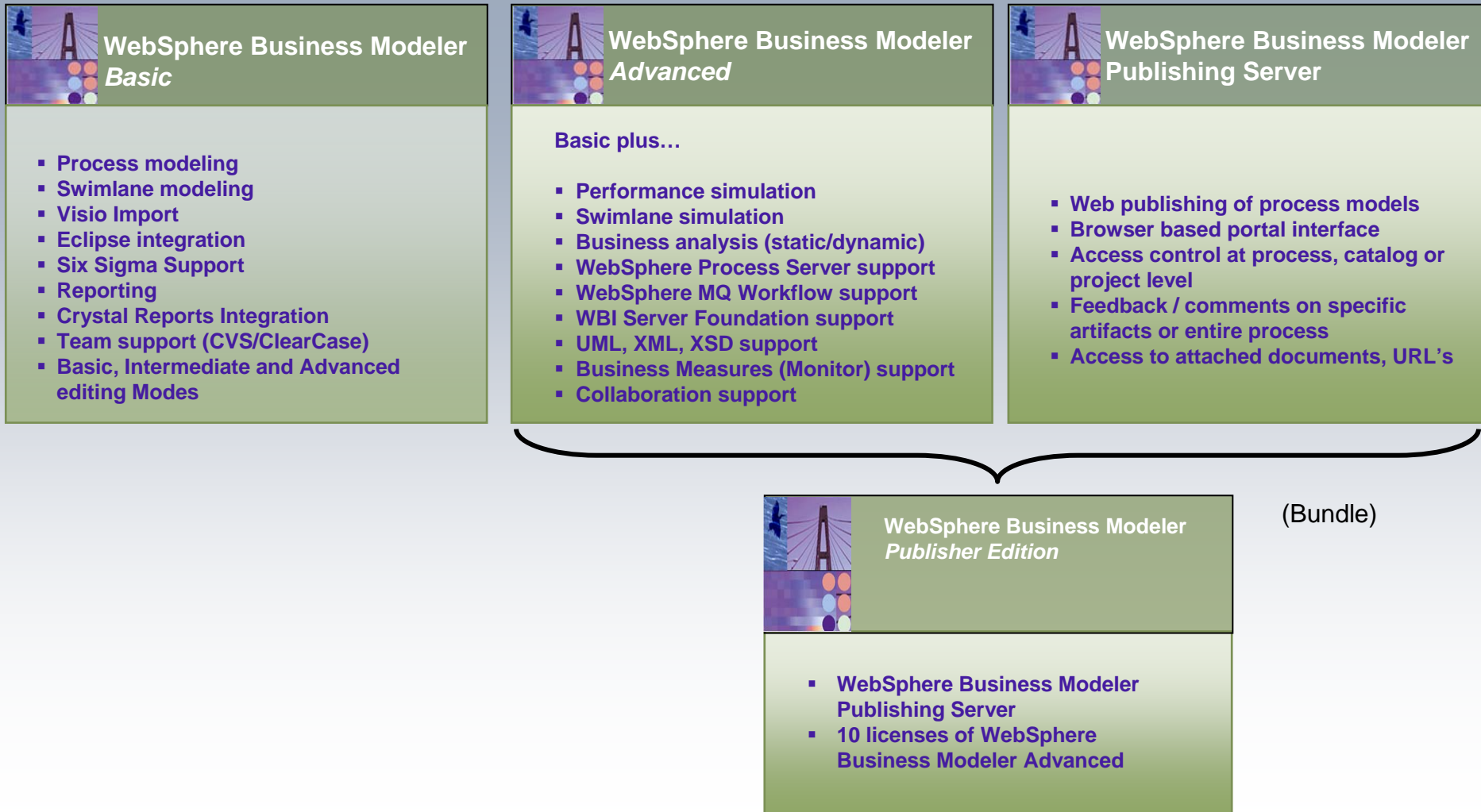
WebSphere Integration Developer or
WebSphere MQ Workflow Buildtime or
WSAD Integration Edition

Feedback for continuous improvement

- Leverage real information about your business
 - Better decisions, quicker
 - Core business facts (runtime statistics) from monitor are passed back into modeler for simulation, analysis, diagnosis, and action
- Improve your business
 - Business process improvement
 - Discover true process behaviors
 - Fact based simulation leading to improved process design for the next solution deployment

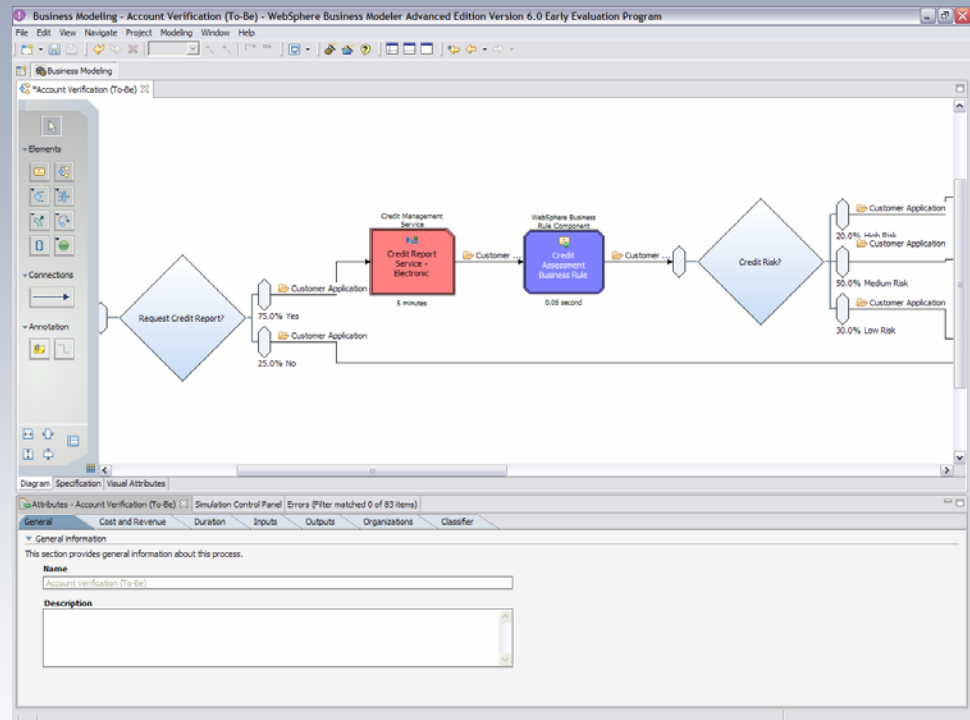


WebSphere Business Modeler Version 6 offerings



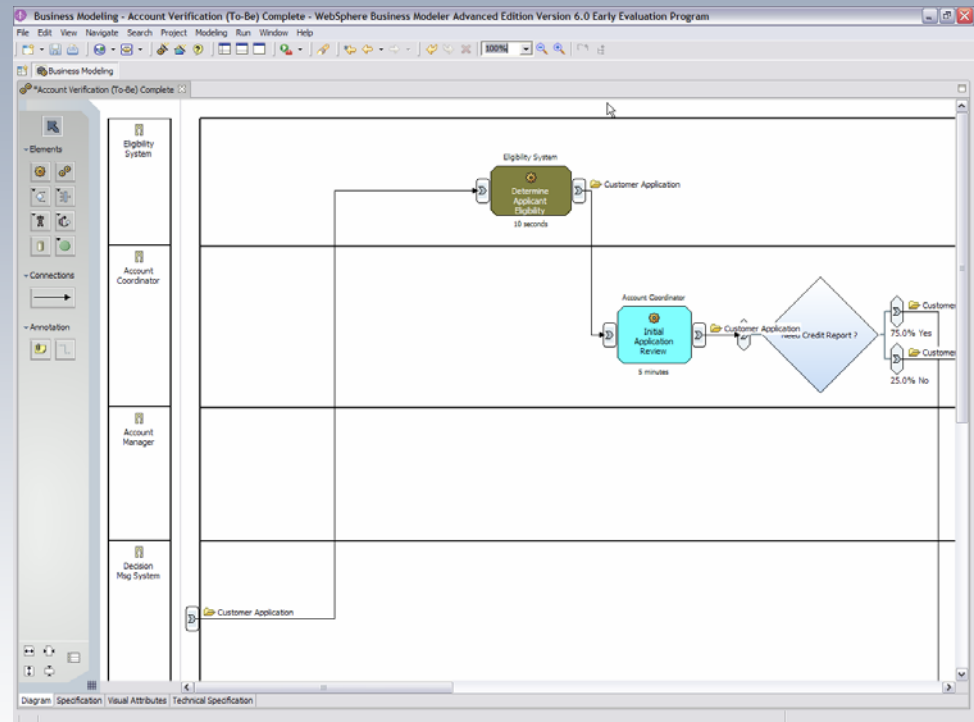
Process modeling

- Ease-of-use top priority
- Extensively user-tested
- Cutting-edge interface
- Editing profiles/modes
- Click-and-drop or right-click
- Click-to-grid option
- Auto-layout of objects
- Right-click to add space
- Swim lane viewer
- Visio import



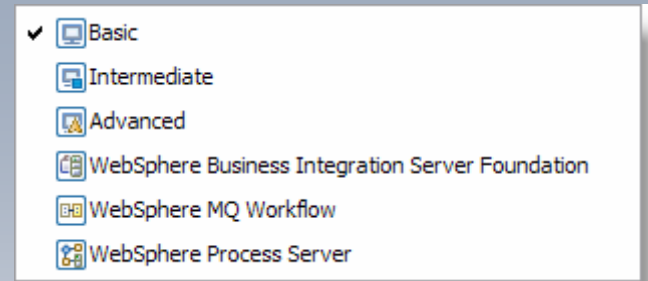
Process modeling: Swimlane Editor

- Model using Line Of Visibility (LoV) methodology
- Quickly reassign tasks, etc. by drag-and-drop to a different swimlane
- Change swimlane order
- Quickly switch between free-form Process Editor and the Swimlane Editor



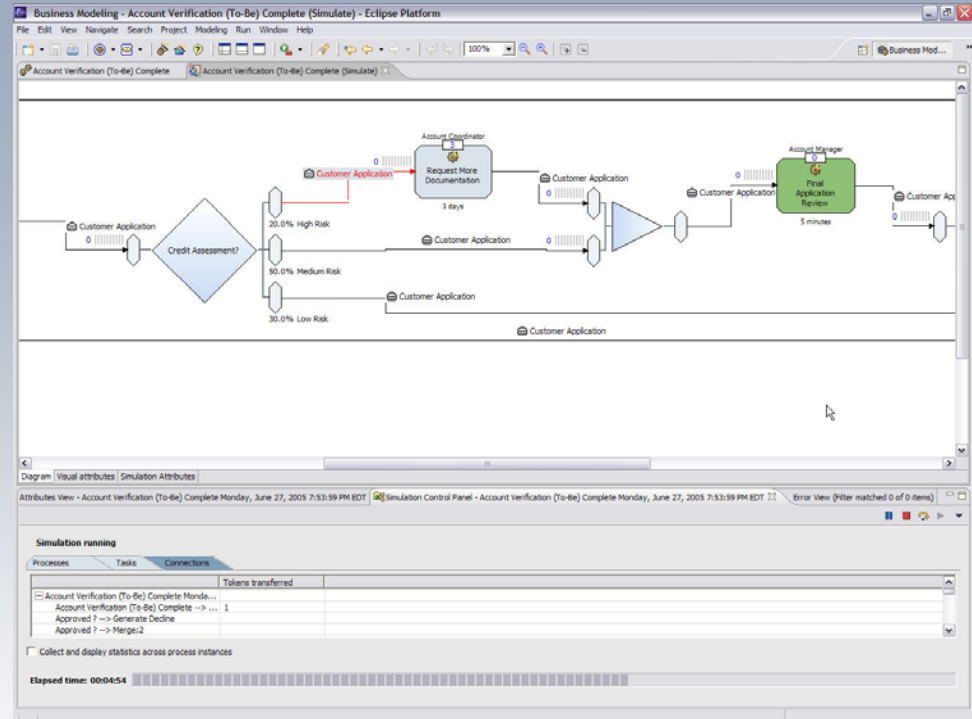
Editing modes

- User modes offer different model detail
 - Basic
 - Intermediate
 - Advanced
- Three technology modes are optimized for specific runtime targets
 - WebSphere Process Server
 - WebSphere MQ Workflow
 - WebSphere Business Integration Server Foundation



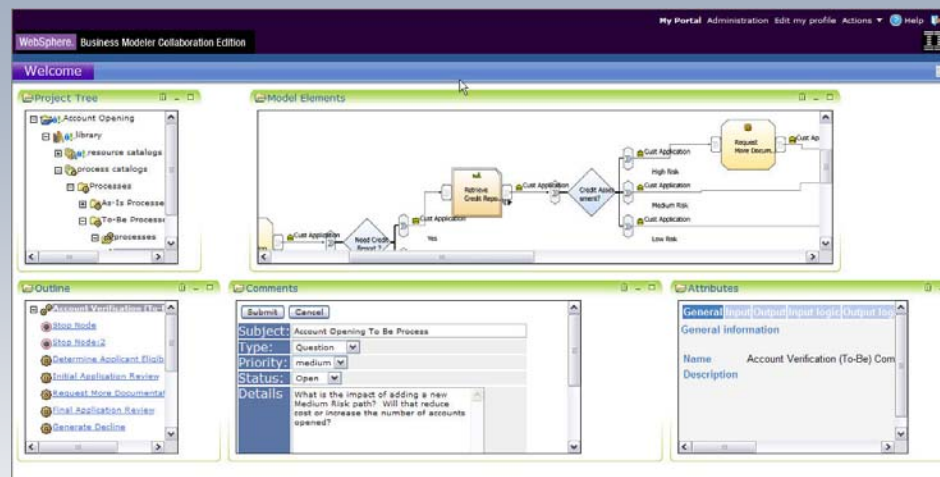
Simulation

- Model "what if" scenarios and compare results
- Simulation warm-up (Steady State simulation)
- Sophisticated modeling and distribution for resources, cost, revenue and processing time
- Detailed resource utilization levels, as well as cost and cycle time calculations



Collaboration: The Publishing Server

- Publish models to portal-based Publishing Server for sharing with browser-based users
- Collect feedback and input through association of comments, responses, and attachments to the model - creates a complete view of the business process and all relevant information
- Allows for design time reviews by associating comments and provide responses to reviewers of the business process model
- Publish business models to end users for training and reference purposes with any necessary associated documents or URL's



The Business Measures Model

- Generate a default Business Measures Model or add custom business measures
- Define what is monitored during the execution of the business process
- Define Key Performance Indicators (KPI) and Metrics both at a business process and activity level
- Define outbound events (alerts) based on business situations

Account Verification (To-Be) 2 Business measures X

Aggregation

KPIs

- Percent Accounts Opened
- Average Account Opening Durat
- Total Credit Extended
- Average Account Opening Cost
- Percent Applications Exceeding Maximum Duration

Metrics

- Total Applications Approved
- Total Applications Rejected
- Total Applications Processed
- Total Applications Exceed Maxim

▼ KPIs

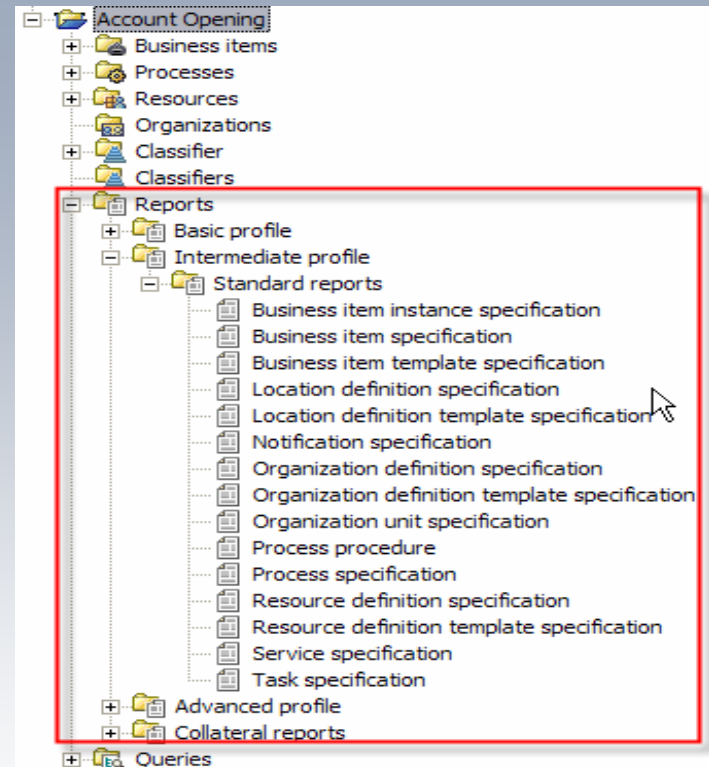
This section provides information about aggregate KPIs.

Name	Type	Aggr...	Aggr...	Use ...	Target	Uppe...	Lowe...	Uppe...	Lowe...
Perce...	Double	Mod...	*Tota...	True	89.5	8	1		
Avera...	Dura...	Aver...	Proc...	True	8 ho...	5	40		
Total ...	Integer	Total	Credi...	True	1000...	10	10		
Avera...	Float	Total	Acco...	True	67.96	1	45		
Perce...	Double	Mod...	*Tota...	True	14.5	2	30		

Add
Remove

Reporting

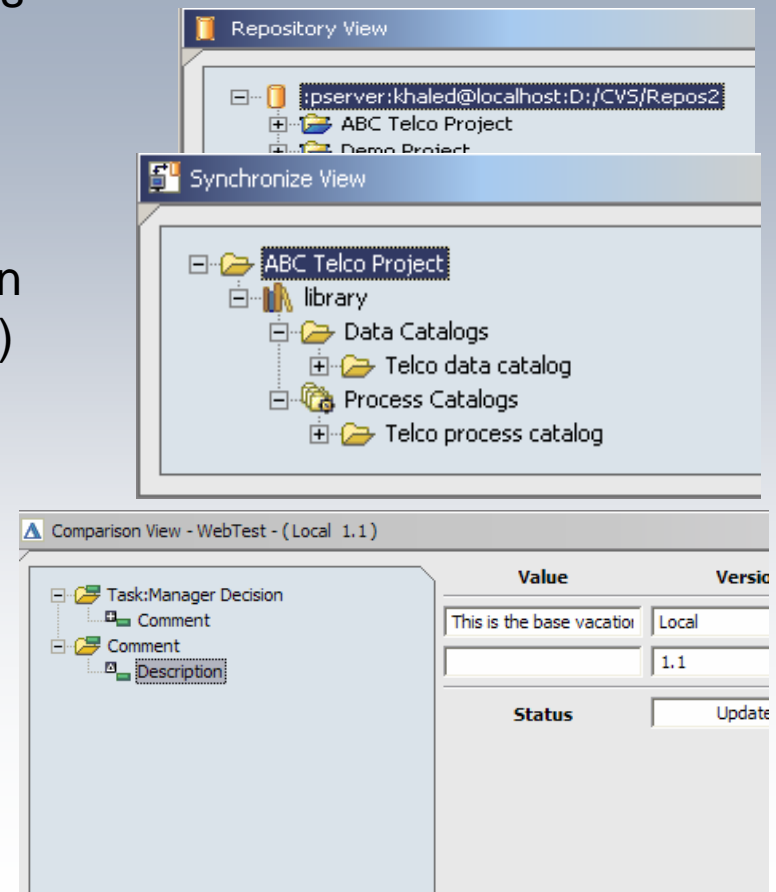
- Pre-defined or user-defined report templates and queries
- Automatically creates written, numerical and graphical information
- Provides valuable guidance in process analysis and redesign:
- Provides return on investment (ROI) comparisons of As-Is and To-Be models



*Optional integration with Crystal Reports

Team Support

- Multi-User support for sharing projects/files via a repository (CVS or ClearCase)
- Comparison view showing differences between two versions a same process
- Audit trail report showing changes done on an element over multiple versions (history)
- View a list of all revisions of an element in the repository features such as Share, Update, Commit, Synchronization



Agenda

- Why Model the Business?
- WebSphere Business Modeler
- IBM Software Development Platform and Business Driven Development



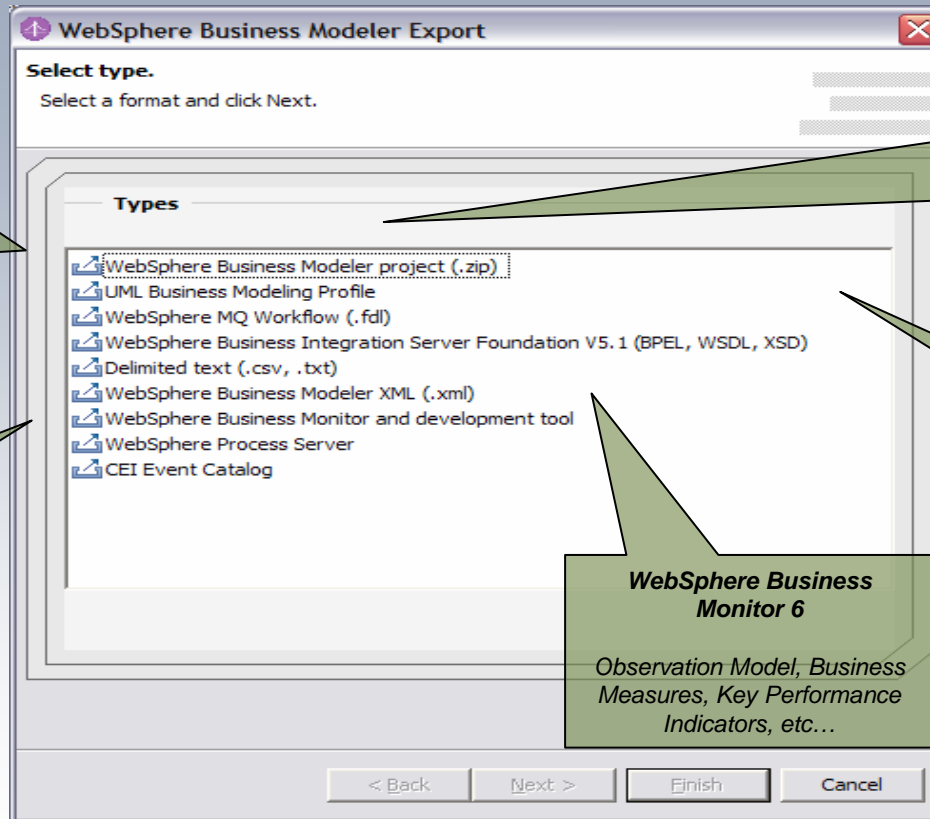
Export Targets of WebSphere Business Modeler Version 6

WebSphere MQ Workflow

FDL Process definition, control links and no-op operations for complex synchronization & decisions.
Includes Data Definitions, etc...

WebSphere Process Server 6

BPEL Process Representation w/Staff assignments
XSDs for Data Type Definition
WSDLs for all 'task/services' and partner definitions & for the process itself



IBM Rational XDE + Business Modeling Profile

Activity and Use Case Diagrams, Class Diagrams and definitions for business items, resources, organizations, etc....

WebSphere Business Monitor 6

Observation Model, Business Measures, Key Performance Indicators, etc...

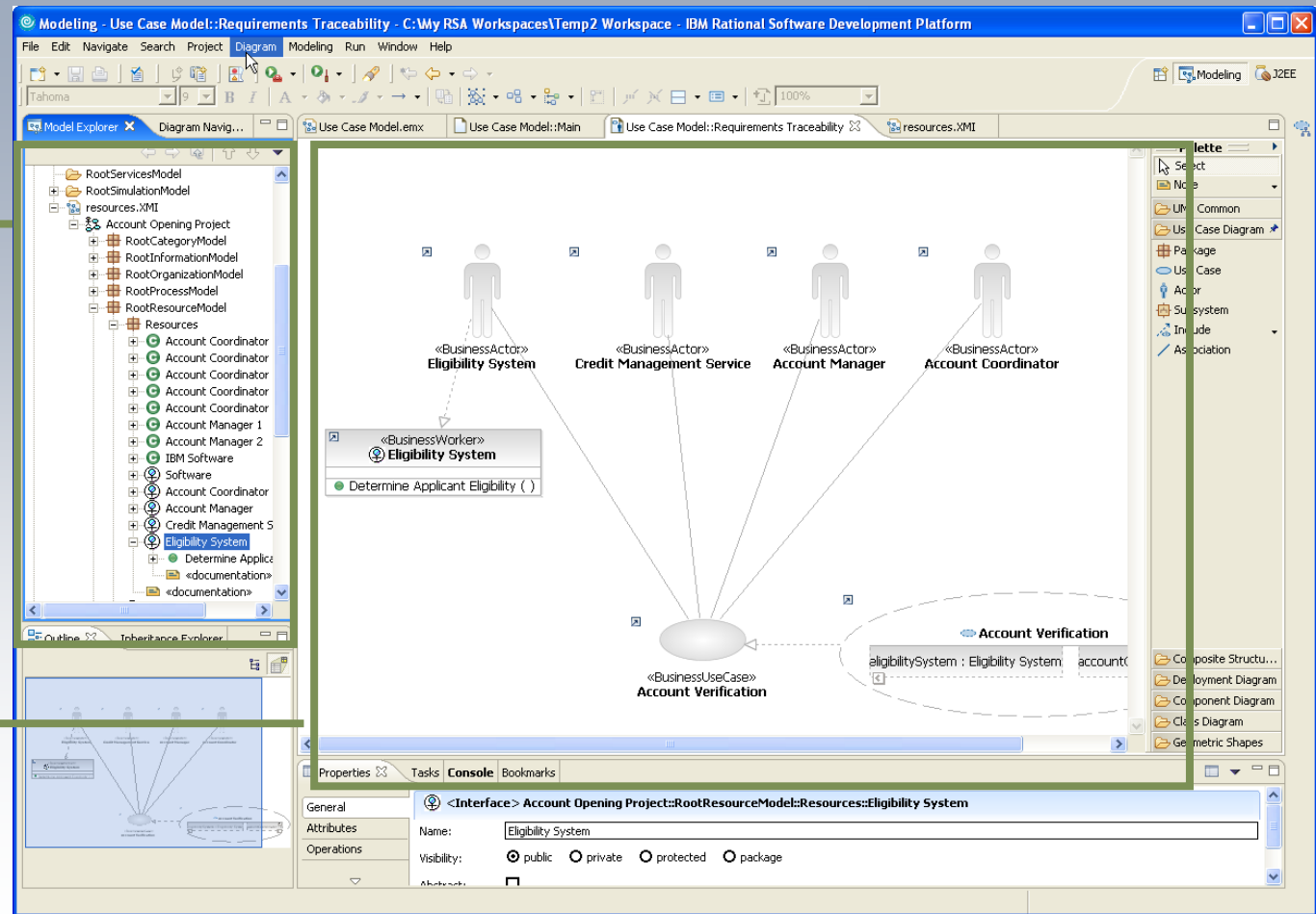
WebSphere Business Integration 5.1

BPEL Process Representation w/Staff assignments
XSDs for Data Type Definition
WSDLs for all 'task/services' and partner definitions & for the process itself

Integration with IBM Rational Software Architect (RSA):

In Rational Software Architect, use the business model from WebSphere Business Modeler as a UML2 Business Contract specification

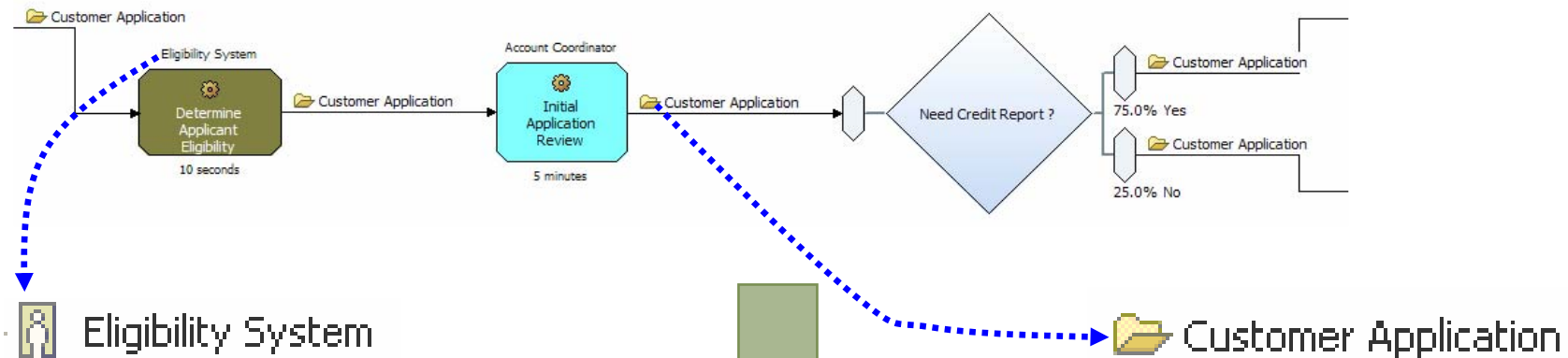
Drag-and-drop modeling artifacts to create UML analysis diagrams



The Business Contract Specification:

- From WebSphere Business Modeler to Rational Software Architect (RSA)

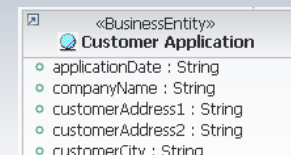
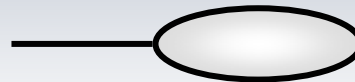
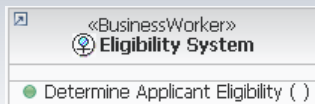
Account Verification Process



process

role

business item



<<Interface>>
<<Business Worker>>
Eligibility System

<<BusinessActor>>
Eligibility System

<<BusinessUseCase>>
Account Verification

<<BusinessEntity>>
Customer Application

WebSphere Business Modeler - recap

- Simple to use business modeling tool
 - Allow the people who know the business to model
 - Drag and drop for the business analyst
- Modeling of the vital aspects of the process
 - Understand business models and make informed decisions before deployment
 - Model resources, roles, organization, information, business metrics
- Collaborative modeling
 - Communicate and participate across your enterprise
 - Enables team work and web publication
- Clean hand-off to I/T
 - Rapid and accurate deployment of your solutions
 - Business modeling is the starting point for I/T deployment



Why WebSphere Business Modeler ?

DISCOVER potential areas for process improvement and latent value in existing processes

Know the financials **BEFORE**, and monitor them **AFTER**

Prove the value of improvement **BEFORE** committing resource and dollars.

Accurately & Effectively communicate requirements from Business to I / T

Cut the time required to develop and implement new processes

Establish and measure the **BUSINESS PERFORMANCE** of the process in real time

Thank You